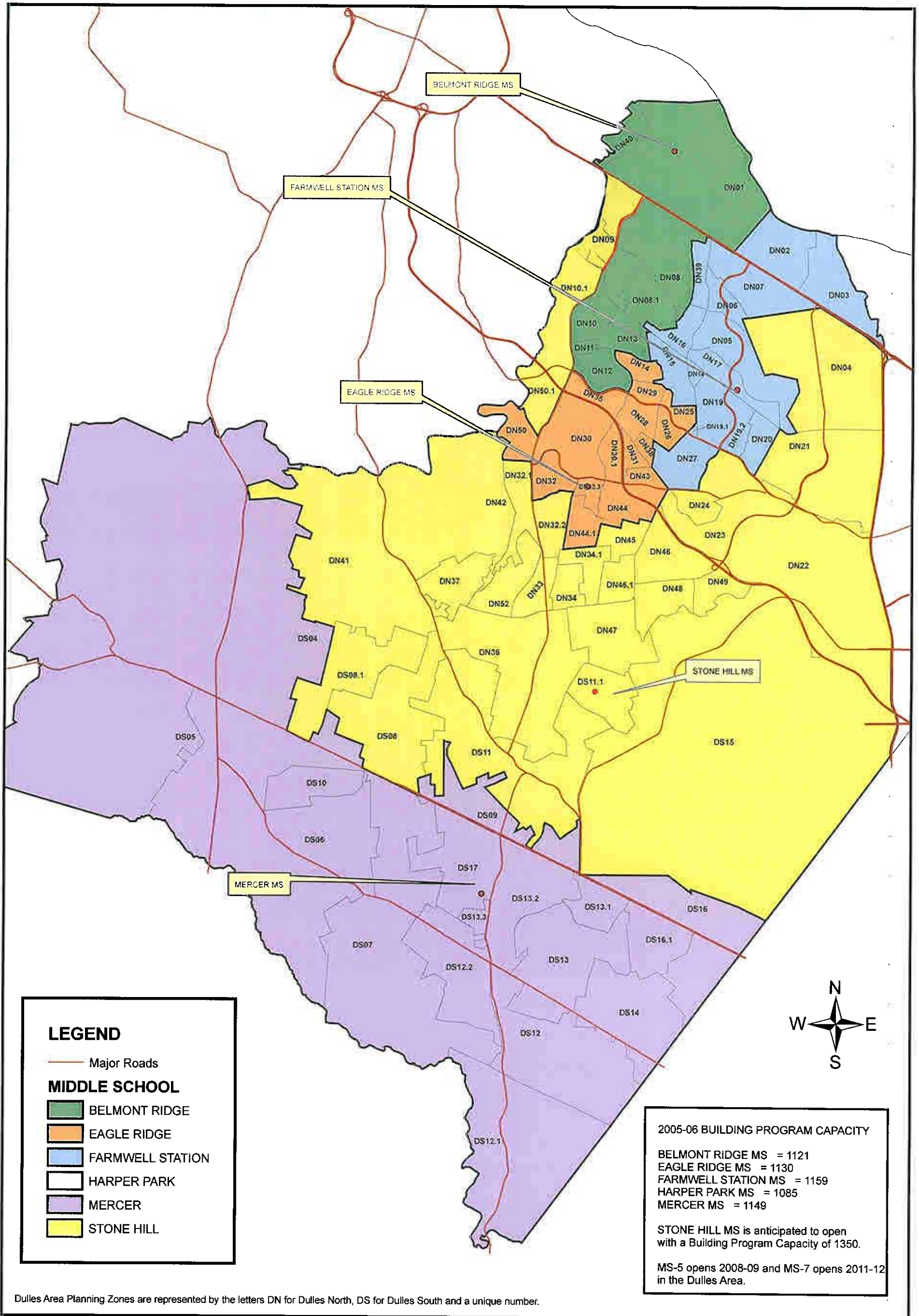


DULLES NORTH / DULLES SOUTH -MIDDLE SCHOOL PLAN

SCHOOL BOARD ADOPTED 5.09.06



Dulles Area Planning Zones are represented by the letters DN for Dulles North, DS for Dulles South and a unique number.

Middle School	2007-08	2008-09	2009-10	2010-11	2011-12
BELMONT RIDGE	996	1007	1100	1149	1270
EAGLE RIDGE	1068	1108	1150	1139	1237
FARMWELL STATION	1274	1372	1334	1290	1267
MERCER	1221	1493	1880	2295	3021
STONE HILL	487	549	650	781	1050